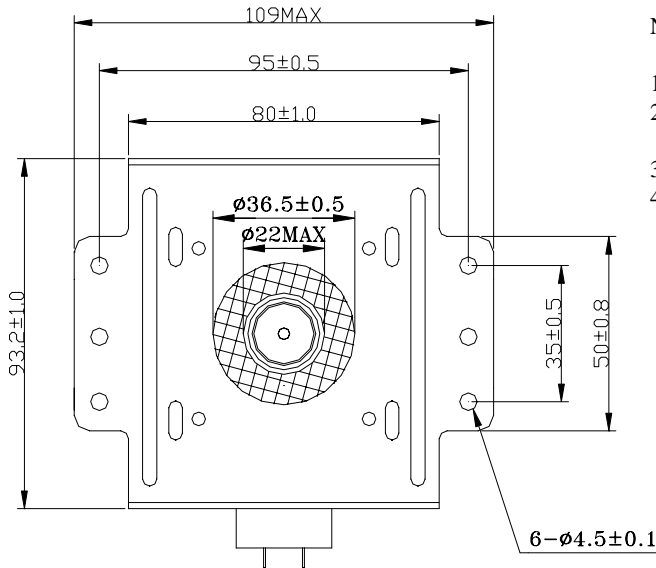


DIMENSIONAL OUTLINE OF 2M246

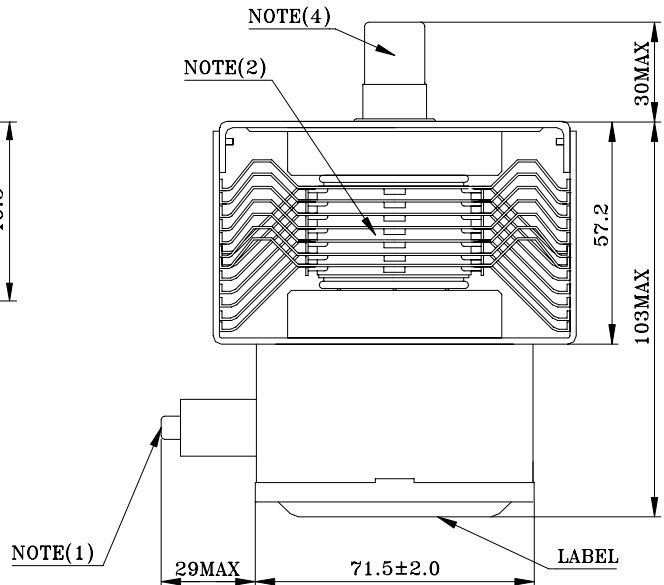
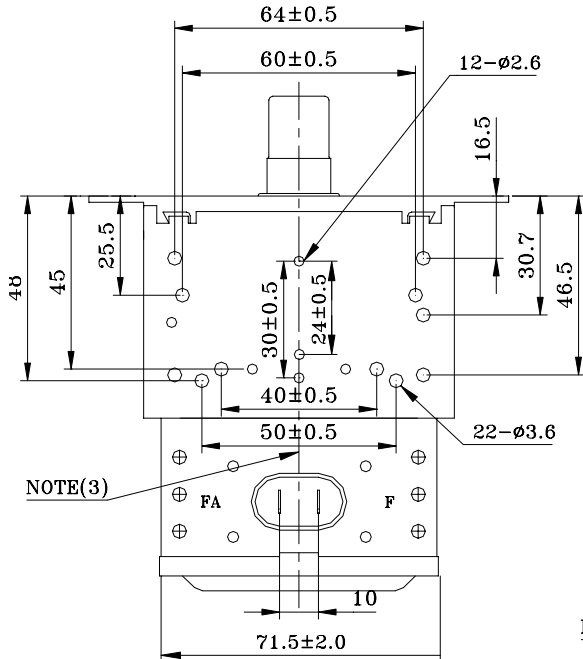
DIMENSIONS IN MILLIMETERS

2M246-01 TYPE



NOTE :

1. ADATABLE TO FASTON 250 SERIES RECEPTACLE.
2. ANODE TEMPERATURE MEASURING POINT.
(DOWN STREAM AIR)
3. CASE TEMPERATURE MEASURING POINT.
4. ANTENNA TEMPERATURE MEASURING POINT.



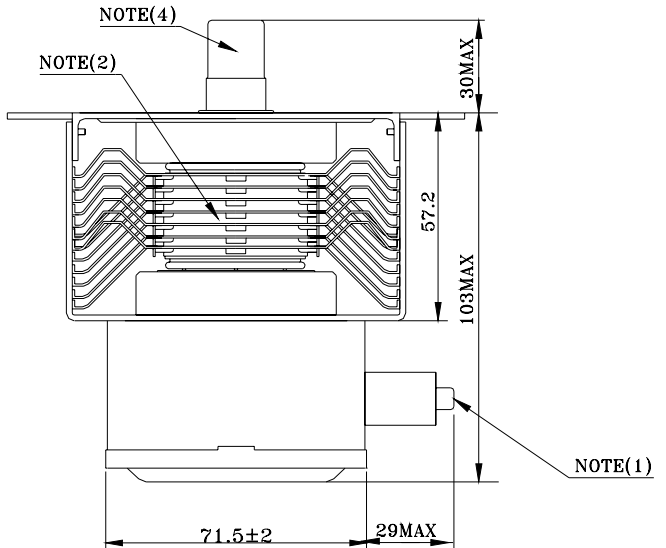
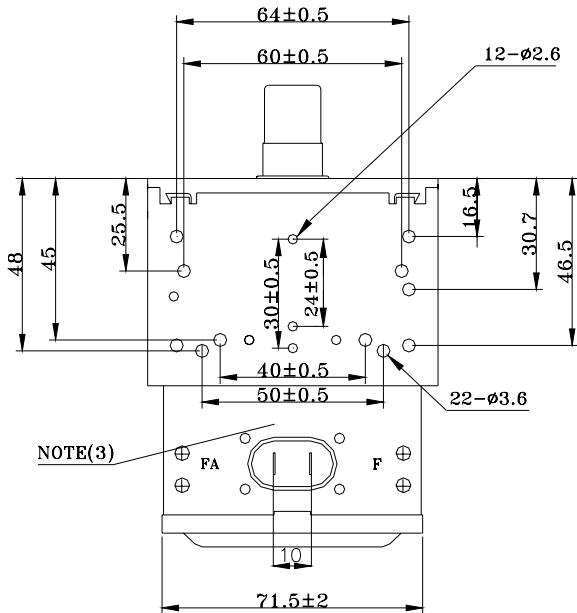
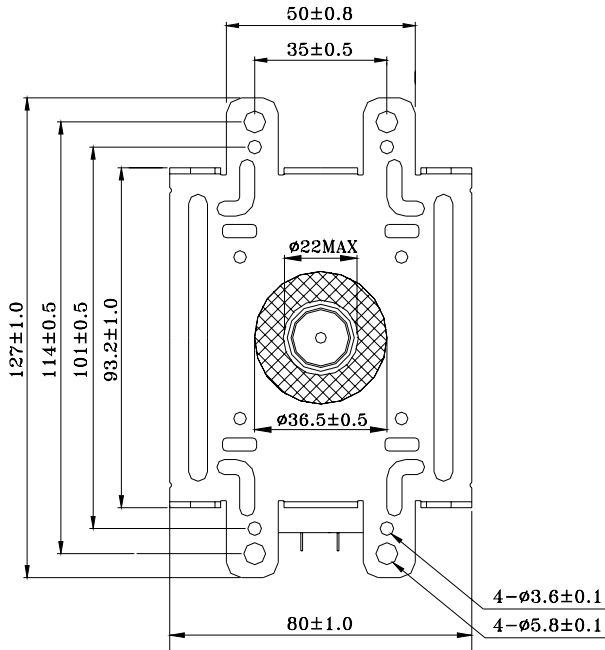
DIMENSIONAL OUTLINE OF 2M246

DIMENSIONS IN MILLIMETERS

2M246-15TYPE

NOTE :

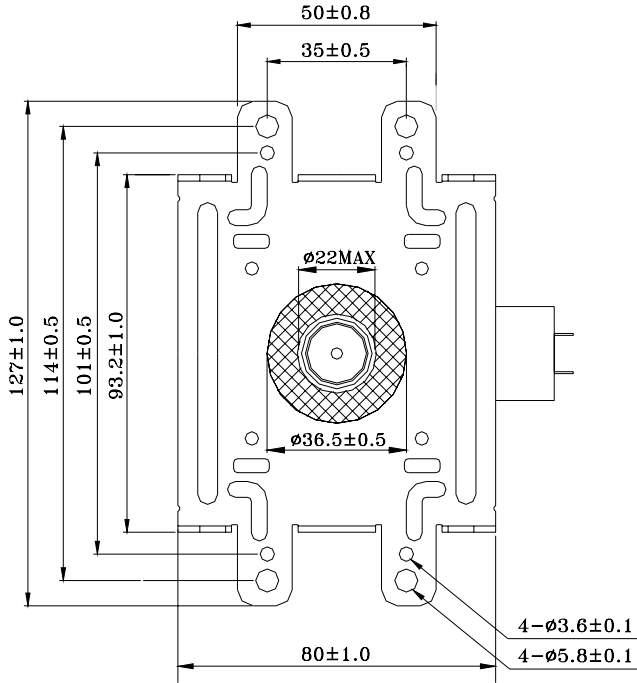
1. ADAPTABLE TO FASTON 250 SERIES RECEPTACLE.
2. ANODE TEMPERATURE MEASURING POINT.
(DOWN STREAM AIR)
3. CASE TEMPERATURE MEASURING POINT.
4. ANTENNA TEMPERATURE MEASURING POINT.



DIMENSIONAL OUTLINE OF 2M246

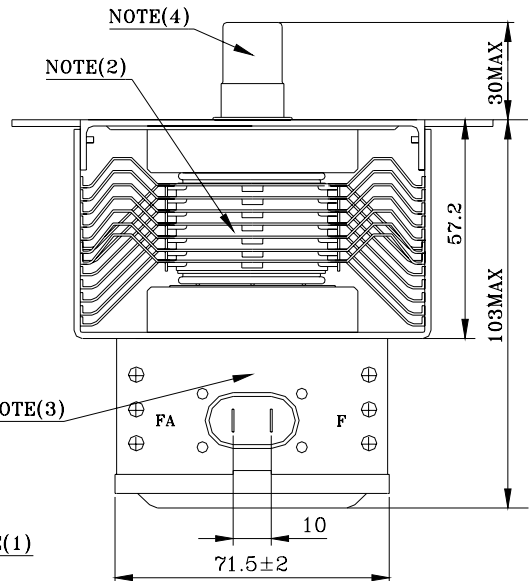
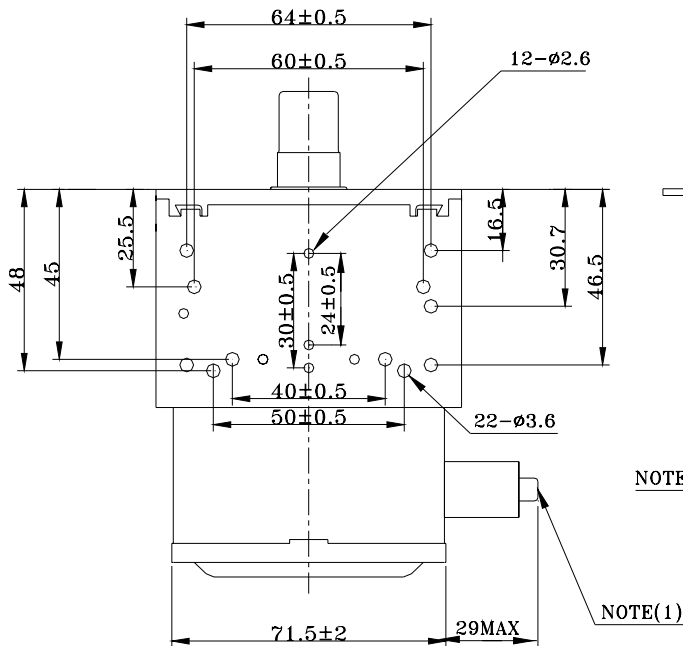
DIMENSIONS IN MILLIMETERS

2M246-35 TYPE



NOTE :

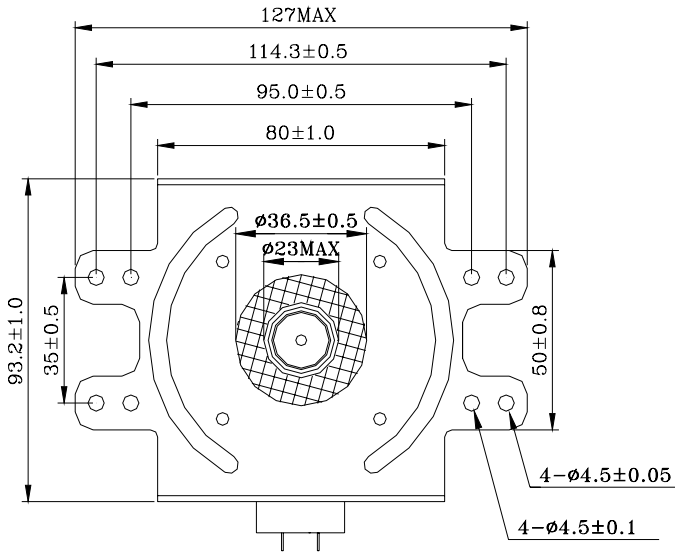
1. ADAPTABLE TO FASTON 250 SERIES RECEPTACLE.
2. ANODE TEMPERATURE MEASURING POINT.
(DOWN STREAM AIR)
3. CASE TEMPERATURE MEASURING POINT.
4. ANTENNA TEMPERATURE MEASURING POINT.



DIMENSIONAL OUTLINE OF 2M246

DIMENSIONS IN MILLIMETERS

2M246-03TYPE



NOTE :

1. ADAPTABLE TO FASTON 250 SERIES RECEPTACLE.
2. ANODE TEMPERATURE MEASURING POINT.
(DOWN STREAM AIR)
3. CASE TEMPERATURE MEASURING POINT.
4. ANTENNA TEMPERATURE MEASURING POINT.
5. GASKET RING'S DIAMETER IS MAX 23MM.

