

King Wahoo Electronics Co., Ltd
Mr. Jenb Zheng Manager
Engineer Dept.
105-4 Bri 3rd St
Keelung 20648
Taiwan

Date : 07.05.2019
Our ref. : YFC 05
Your ref.:

Ref : R TÜV-Mark Approval

Type of Equipment : Cartridge Fuse-links
Model Designation : See Certificate
Certificate No. : R 50435555 0001
Report No. : 50220652 001

Dear Mr. Jenb Zheng,

The above specified technical equipment has been tested and found to be in accordance with the relevant requirements.

Enclosed you will find the certificate of approval.

If cancellation of the certificate is submitted by November 15 in a given year, no fee will be charged for the following year.

We appreciate your kind support and would like to offer our assistance and continuous services in the future.

Please contact our office for approval of your new products.

With kind regards,

Certification Body

G. Yin

Enclosure

证书的详细资料请登陆www.certipedia.com查阅,或拨打我司客服热线800 999 3668 / 400 883 1300咨询

Zertifikat

Certificate



Zertifikat Nr. *Certificate No.*
R 50435555

Blatt *Sheet*
0001

Ihr Zeichen *Client Reference*

Unser Zeichen *Our Reference*
05-YFC-50220652 001

Ausstellungsdatum *Date of Issue*
07.05.2019 (day/mo/yr)

Genehmigungsinhaber *License Holder*

King Wahoo Electronics Co., Ltd
105-4 Bri 3rd St
Keelung 20648
Taiwan

Fertigungsstätte *Manufacturing Plant*

King Wahoo Electronics Co., Ltd
No. 23 Jintan Road
Shanwu, Shijie Town
Dongguan, GuangDong 523295
P. R. China

Prüfzeichen *Test Mark*



Type Approved
Safety
Regular Production
Surveillance

www.tuv.com
ID 1419068724

Geprüft nach *Tested acc. to*

EN 60127-1:2006+A1+A2
EN 60127-2:2014

Zertifiziertes Produkt (Geräteidentifikation)

Certified Product (Product Identification)

Lizenzentgelte - Einheit

License Fee - Unit

Fuse Link (Cartridge Fuse-links)

Type Designation	: 5TC 5TS S510 S502	8
Trademark	: King Wahoo (logo)	
Rated Voltage	: 1) AC 250V; 2) AC 400V; 3) AC 500V	5
Rated Current	: 500mA; 630mA; 800mA; 1A; 1,25A; 1,6A; 2A; 2,5A; 3,15A; 4A; 5A; 6,3A; 8A; 10A	
T/I Characteristic	: T	
Rated Breaking Capacity:	1) H: 1500A; 2) 300A; 3) 200A	
Dimension	: 5mmx20mm without lead wire for 5TC with Lead wire for 5TS; S510; S502	

Remark:

The requirements of standard sheet 5 were taken into consideration.

The labelling requirements according to EU Directive 2001/95 have to be observed for distribution within the EEA.

The installation has to be carried out according to installation instruction accompanying the products.

13

ANLAGE (Appendix): 1

Dem Zertifikat liegt unsere Prüf- und Zertifizierungsordnung zugrunde und es bestätigt die Konformität des Produktes mit den oben genannten Standards und Prüfgrundlagen. Zusätzliche Anforderungen in Ländern, in denen das Produkt in Verkehr gebracht werden soll, müssen zusätzlich betrachtet werden. Die Herstellung des zertifizierten Produktes wird überwacht.

This certificate is based on our Testing and Certification Regulation and states the conformity of the product with the standards and testing requirements as indicated above. Any additional requirements in countries where the product is going to be marketed have to be considered additionally. The manufacturing of the certified product is subject to surveillance.

TÜV Rheinland LGA Products GmbH, Tillystraße 2, 90431 Nürnberg

Tel.: +49 221 806-1371 e-mail: cert-validity@de.tuv.com
Fax: +49 221 806-3935 http://www.tuv.com/safety



Certificate No. R 50435555 0001 **Our Reference** 05-YFC-50220652 001 **Appendix No.** 1

Constructional Data Form (CDF) for Fuse-links

Page 1 of 2

License holder	: King Wahoo Electronics Co., Ltd. 105-4 Bri 3rd St, Keelung 20648, Taiwan
Factory	: King Wahoo Electronics Co., Ltd. No. 23 Jintan Road, Shanwu, Shijie Town, Dongguan, GuangDong 523295, P.R. China
Kind of device	: Cartridge Fuse-links
Type designation	: 5TC, 5TS, S510, S502

Type Designation	5TC: without Lead wire; 5TS, S510, S502: with Lead wire		
Rated Current (I _n)	500mA; 630mA; 800mA; 1A; 1,25A; 1,6A; 2A; 2,5A; 3,15A; 4A; 5A; 6,3A; 8A; 10A		
Rated Voltage (U _n)	250V	400V	500V
Kind of Current and Rated Frequency	AC, 50Hz / 60Hz		
Rated Breaking Capacity	H: 1500A	300A	200A
Standard sheet	5		
Normal ambient temperature	15°C-35°C		
Time/Current Characteristics	T: Time-lag (detail see appended table 1)		
Maximum Rated Power Dissipation	See appended table 2		
Maximum Voltage drop (measured at 20°C ambient temperature at rated current)	See appended table 2		
Cut-off Current Characteristics	--		
I ² t Characteristics	--		
Dimensions	See dimension drawing		
Termination material	Tin plated copper (Lead wire); Nickel plated brass (End cap)		
Solder type(1 or 2) according to IEC68-2-20	--		

Part Name	Material Name	PTI minimum	Flame Class	Material Group
Lead wire fixed on cap (5TS, S510, S502)	Tin plated copper	--	--	--
End cap	Nickel plated brass, Cu 64%-68%	--	--	--
Tube	Ceramic	--	--	--
Fuse-link element	Copper alloy	--	--	--
Filling material	SiO ₂	--	--	--
Solder	Lead-free solder	--	--	--

TÜV Rheinland Group

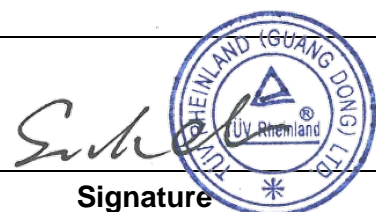
2019-04-30

Sarah Chen

Date

Name

Signature



Constructional Data Form (CDF) for Fuse-links

Others

Table 1: Time/Current Characteristics

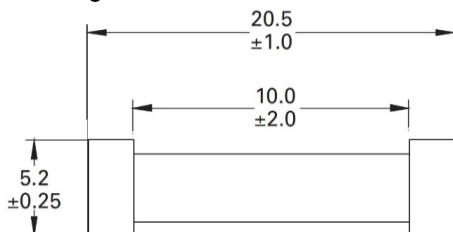
Rated Current (I _n)	2,1I _n	2,75I _n		4I _n		10I _n	
	Maximum	Minimum	Maximum	Minimum	Maximum	Minimum	Maximum
500mA-800mA	30min	250ms	80s	50ms	5s	5ms	150ms
1A-3,15A	30min	750ms	80s	95ms	5s	10ms	150ms
4A-10A	30min	750ms	80s	150ms	5s	10ms	150ms

Table 2: Maximum sustained power dissipation and voltage drop

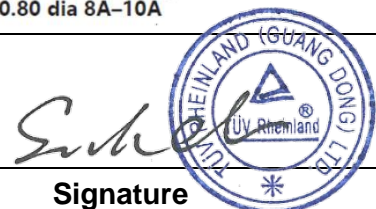
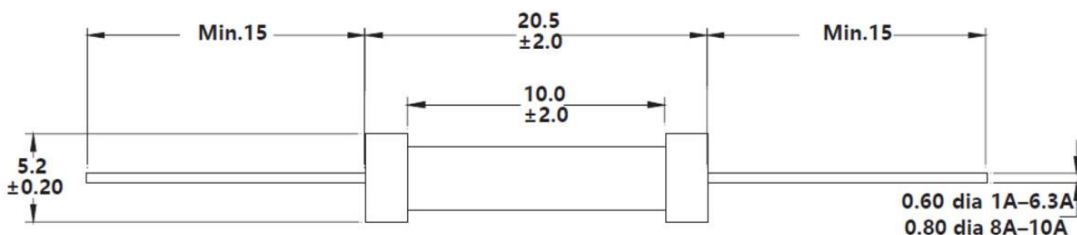
Rated Current (I _n)	Rated Voltage (U _n)	Maximum voltage drop (mV)	Maximum sustained power dissipation (W)
500mA	AC 250V/400V/500V	850	1.6
630mA		650	1.6
800mA		500	1.6
1A		350	2.5
1,25A		300	2.5
1,6A		200	2.5
2A		190	2.5
2,5A		180	2.5
3,15A		140	4
4A		100	4
5A		100	4
6,3A		100	4
8A		100	4
10A		100	4

Dimension (mm):

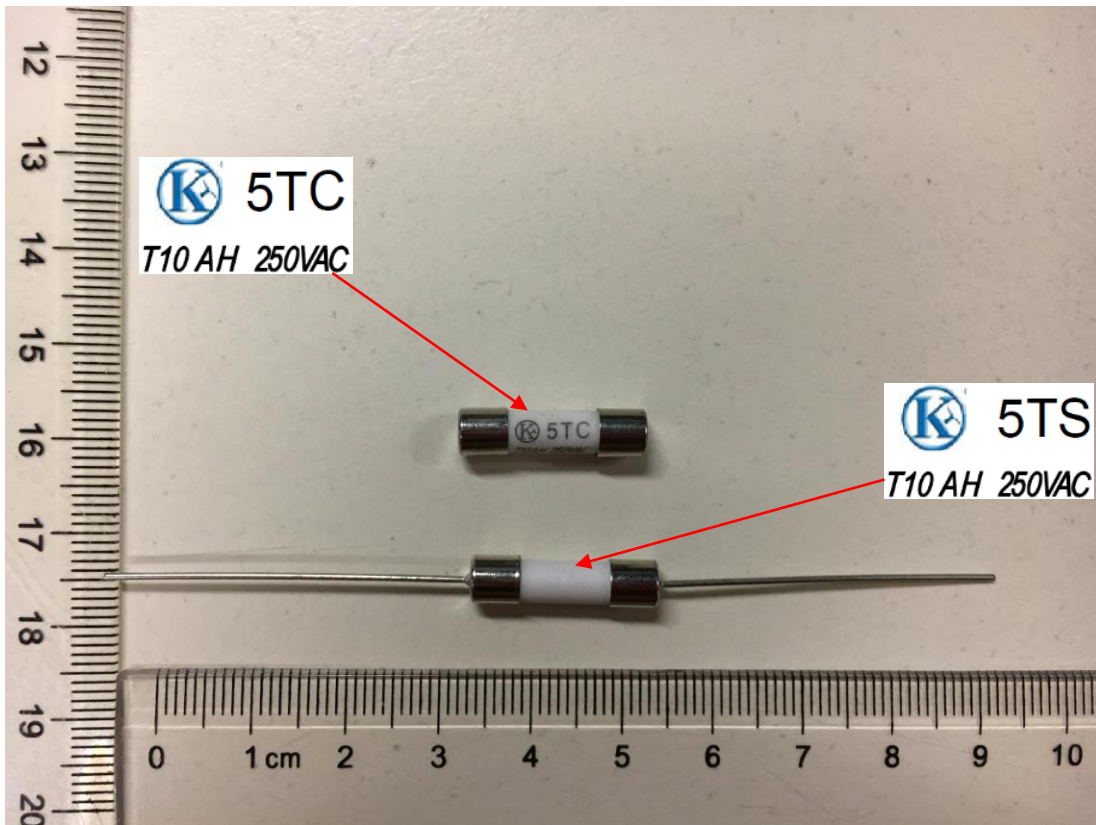
5TC, cartridge enclosed without lead wire:



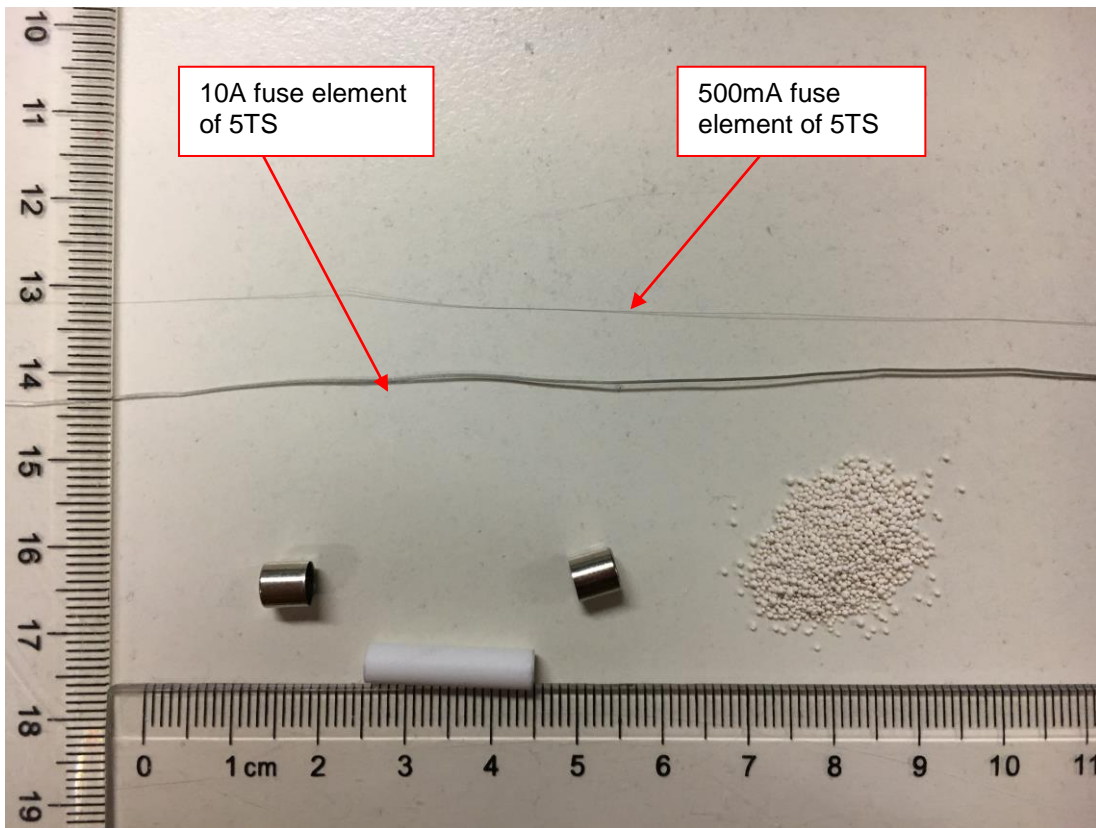
5TS, S510, S502, cartridge enclosed with lead wire (the length of lead wire will be changed, if necessary):



Model: 5TC, 5TS, S510, S502

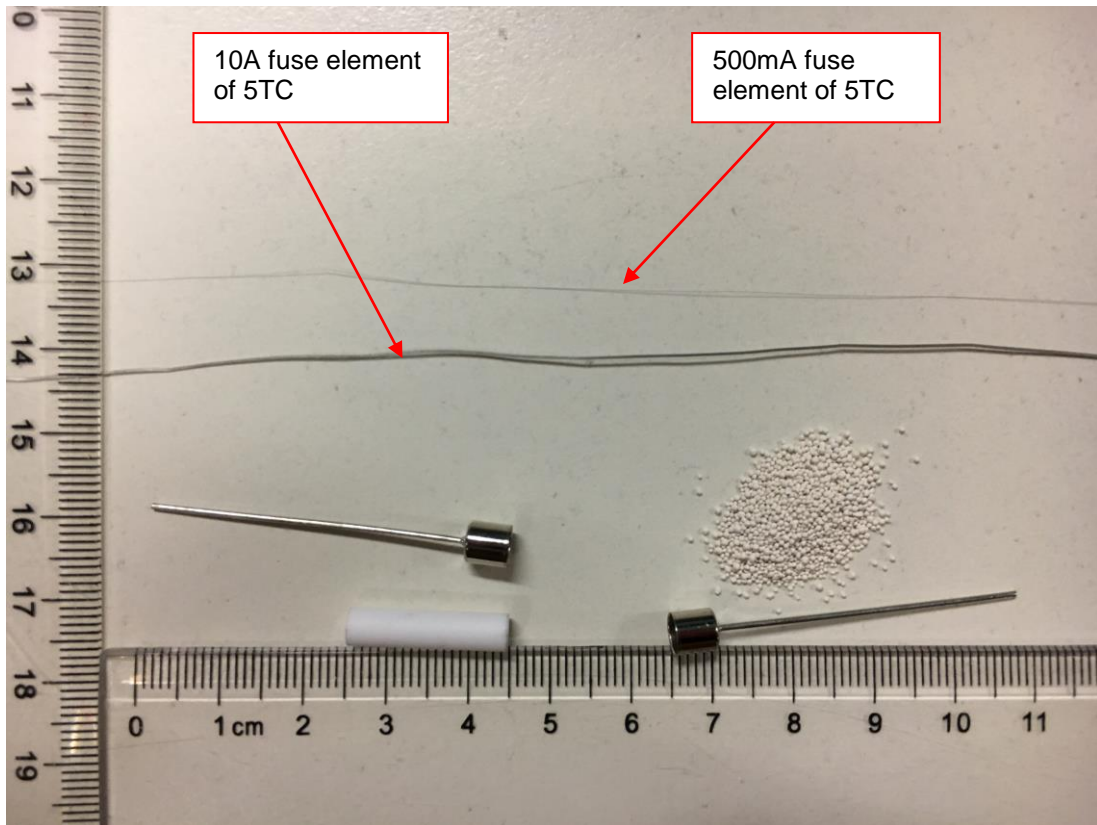


Picture 1



Picture 2 5TS

Model: 5TC, 5TS, S510, S502



Picture 2 5TC